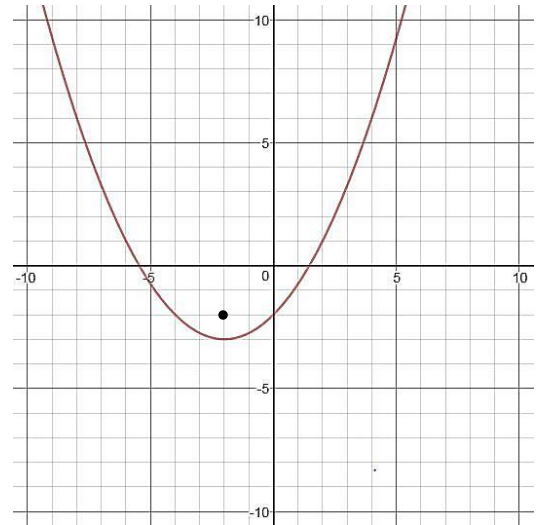


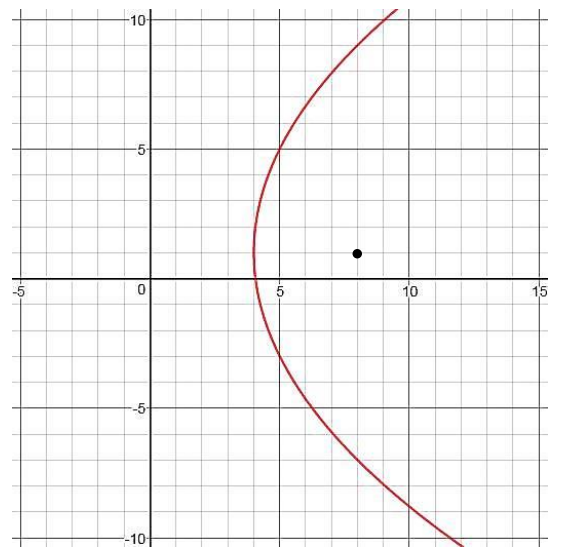
MORE PRACTICE: Parabolas 1

Find the specified quantities:

1. a. The Vertex _____
- b. Coordinates of the Focus _____
- c. Draw the Directrix _____
- d. The equation of the Directrix _____
- e. Draw the Latus Rectum _____
- f. The length of the Latus Rectum _____



2. a. The Vertex _____
- b. Coordinates of the Focus _____
- c. Draw the Directrix _____
- d. The equation of the Directrix _____
- e. Draw the Latus Rectum _____
- f. The length of the Latus Rectum _____



3. a. The Vertex _____
- b. $h =$ _____ $k =$ _____

The equation of this parabola is : $y = -\frac{1}{8}x^2 + 5$

- c. $a =$ _____
- d. The coordinates of the Focus _____
- e. Draw the Focus _____
- f. The equation of the Directrix _____
- g. Draw the Directrix _____
- h. Calculate the length of the Latus Rectum _____

